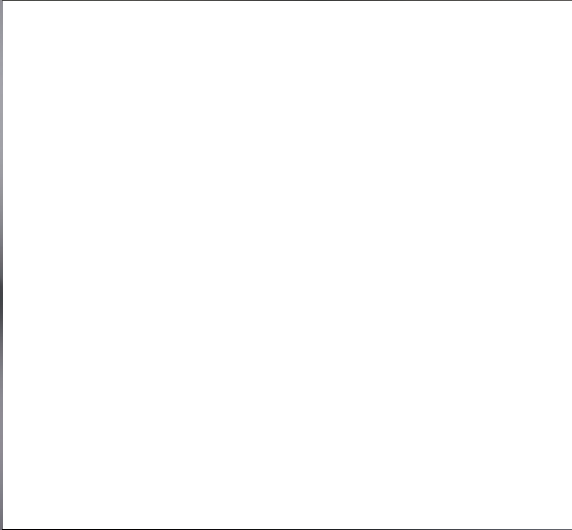
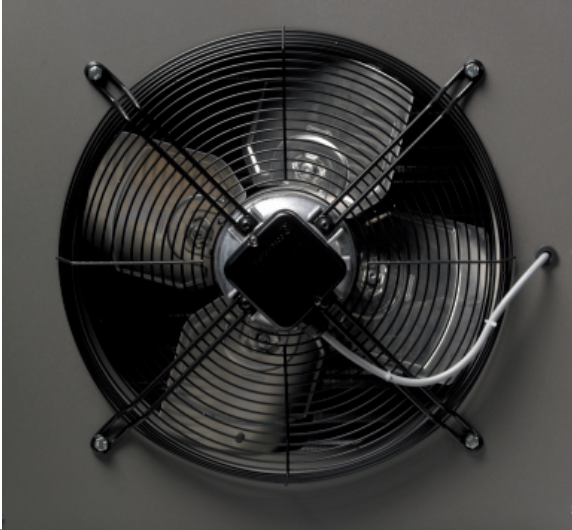
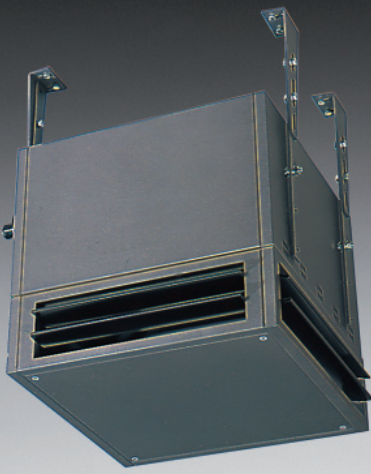
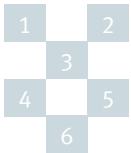
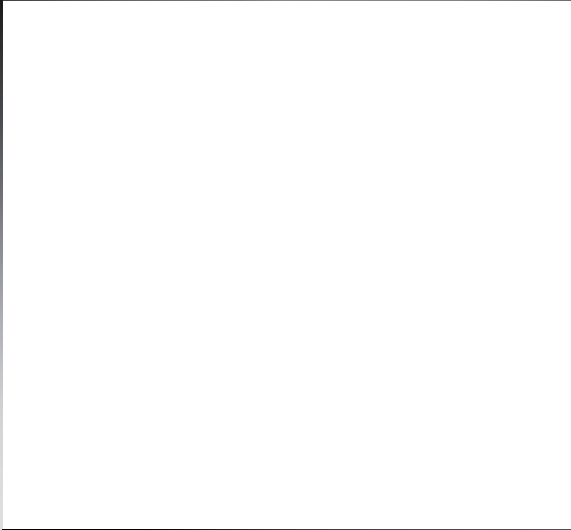
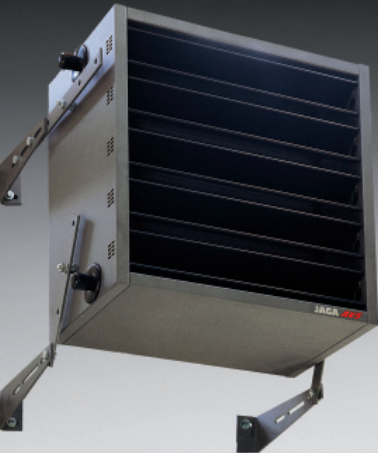


# JAGA AVS-Unit Heaster





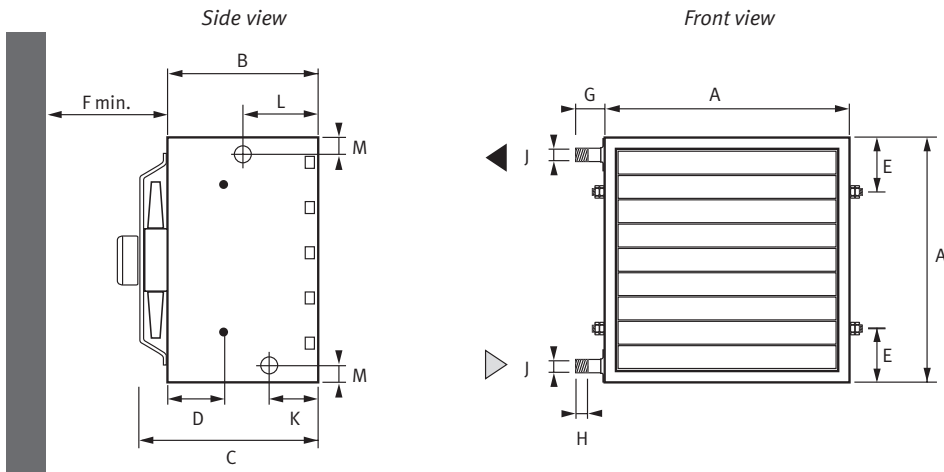
JAGA AVS-Unit heater



- 1. UH with 4-sided AVS air diffuser
- 2. a Ziehl-Abegg external motor
- 3. UH with exhaust cone
- 4. UH with set of brackets A
- 5. UH with safety switch
- 6. Mini UH

# Jaga AVS® Unit heater

## Dimensions



Type		021	031	120	130	220	230	320	330	420	430
Outside dimensions	A	41.0	41.0	53.0	53.0	65.0	65.0	77.0	77.0	89.0	89.0
	B	40.0	40.0	40.0	40.0	40.0	40.0	40.0	40.0	40.0	40.0
	C	43.5	43.5	44.0	44.0	44.6	44.6	45.2	45.2	46.5	46.5
Installation	D	15.1	15.1	15.1	15.1	15.1	15.1	15.1	15.1	15.1	15.1
	E	10.5	10.5	11.5	11.5	12.5	12.5	13.5	13.5	14.5	14.5
	F	30.0	30.0	35.0	35.0	45.0	45.0	56.0	56.0	65.0	65.0
Connections	G	4.8	4.8	4.8	4.8	4.8	4.8	5.1	5.1	5.1	5.1
	H	2.2	2.2	2.2	2.2	2.2	2.2	2.5	2.5	2.5	2.5
	øJ	G1"	G1"	G1"	G1"	G1"	G1"	G6/4"	G6/4"	G6/4"	G6/4"
	K	12.9	12.9	12.9	12.9	12.9	12.9	12.9	12.9	12.9	12.9
	L	19.8	19.8	19.8	19.8	19.8	19.8	19.8	19.8	19.8	19.8
	M	4.5	4.5	4.5	4.5	4.5	4.5	5.2	5.2	5.2	5.2
	Weight	kg	20.0	22.0	30.0	32.0	43.0	46.0	56.0	59.0	71.0

Dimensions in cm

# Jaga Mini Unit heater \_ 230 V mono

Model Type  
ORDERING CODE STANDARD:UNIT.021

Type	Speed	Output			Air exhaust-temperature			Revolutions	Air flow	The noise level	Hot air carrying			Hot air carrying is an approximative value for free drawing and exhausting air Tl ca. 15 à 20K over the room temperature.							
		kwatts	kwatts	kwatts	C°	C°	C°				Horizontal standard	Vertical standard	air diffuser		m	m	m	m	m	m	
		Tv 80 Tr 60 Tl 20 ΔT=50	Tv 70 Tr 55 Tl 15 ΔT=42.5	Tv 55 Tr 45 Tl 15 ΔT=35	at the heat exchanger, before the AVS-effect makes the temperature drop Tl 15°  Tl 15° ΔT=50 ΔT=42.5 ΔT=35					at 5m	Horizontal standard min	with AVS	without AVS	Vertical standard max	H max	H max	air diffuser max		4 sides open	2 sides open	
		kwatts	kwatts	kwatts	C°	C°	C°	RPM	m³/u	dBa	m	m	m	m	m	m	m	m	m	m	
UNIT 021	5	7,3	6,2	5,1	35	32	25	1375	1470	44		21.0	16.0	8.0	5.5	2.5	5.0	10.0			
	4	7,1	6,0	5,0	36	34	26	1220	1300	43		19.0	14.0	6.5	4.5		4.5	9.0			
	3	6,4	5,4	4,5	38	35	27	1020	1060	35	2.5	15.0	12.0	5.0	3.5	2.5	3.5	7.0			
	2	5,5	4,7	3,9	41	38	30	775	770	28		11.0	8.0								
	1	4,5	3,8	3,2	44	41	32	575	540	24		8.0	6.0								
UNIT 031	5	9,6	8,2	6,7	42	39	30	1370	1290	45		19.0	14.0	7.5	5.0	2.5	4.5	9.0			
	4	9,0	7,7	6,3	43	40	31	1230	1140	44		17.0	12.0	6.5	4.5		4.0	8.0			
	3	8,1	6,9	5,7	45	42	33	1030	930	36	2.5	14.0	10.0	5.0	3.5	2.5	3.0	6.5			
	2	6,5	5,5	4,6	49	44	35	780	660	29		10.0	7.0								
	1	5,3	4,5	3,7	54	49	39	570	450	25		7.0	5.0								

### Standard delivery

Fully preassembled equipment in colour 001 sandblast grey metallic  
Including manual AVS-system  
Not included safety switch.

### Options

Fixing with set of brackets A p. 160  
4-sided AVS air diffuser: p. 162  
Double deflection front grille: p. 163  
Switch boxes: p. 165

### Connection options

CODE	Description
.../SS	Fitted safety switch 1 x 230 V at the side

Example: UNIT. 021/SS



Unit heater

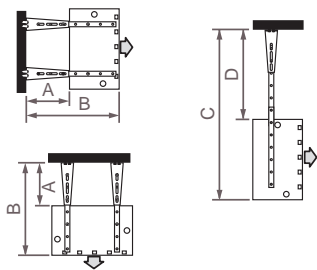
# Jaga AVS® Unit heater\_Brackets and Fixing set

With brackets and fixing set to use?

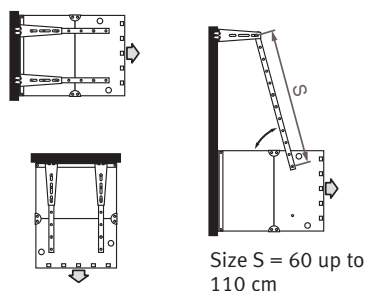


Unit heater

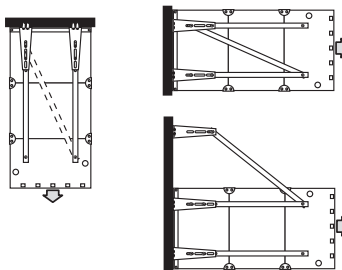
**Without air inlet options** \_\_\_\_\_  
Set of brackets A



**With 1 air inlet options** \_\_\_\_\_  
set of bracket A + Mounting set A



**With 2 air inlet options** \_\_\_\_\_  
set of bracket B + Mounting set B



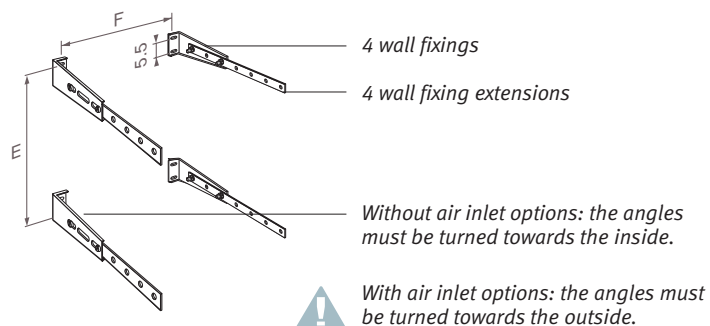
Size	A		B		C		D		E	F	G
	min.	max.	min.	max.	min.	max.	min.	max.			
000(Mini)	36	67	77	107	72.5	132.5	31.5	101.5	---	---	---
100	36	67	77	107	83.5	143.5	30.5	90.5	35.5	53	63.5
200	36	67	77	107	94.5	144.5	29.5	79.5	45.5	65	75.5
300	36	67	77	107	105.5	145.5	28.5	68.5	55.5	77	87.5
400	36	67	77	107	116.5	146.5	27.5	57.5	65.5	89	99.5

Dimensions E, F, G: see the drawings of the set of brackets.

Dimensions in cm

## set of bracket A

For unit heater without or with one air inlet option.

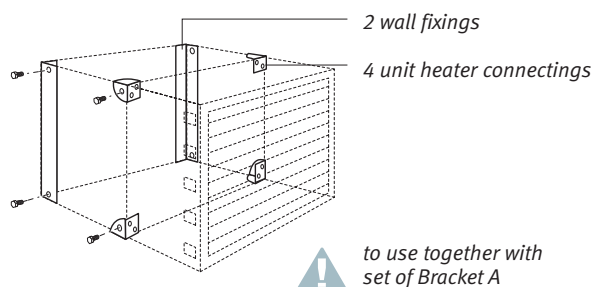


Size	CODE
identical for all sizes	8376.010100

- Carrying capacity: 150 kg
- Finish in the same colour as the unit heater (sandblast grey metallic, colour 001).
- inclusive screw bolts

## Fixing set A

For mounting of 1 air inlet option



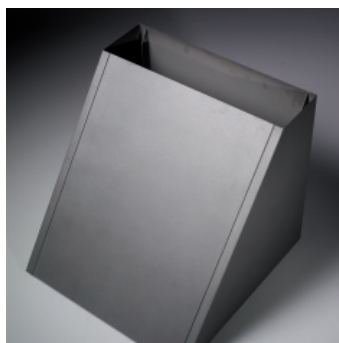
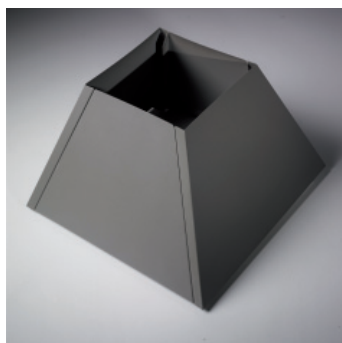
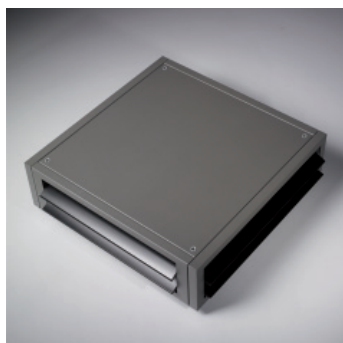
Size	CODE
100	8376.040001
200	8376.040002
300	8376.040003
400	8376.040004

- Finish in the same colour as the unit heater (sandblast grey metallic, colour 001).
- incl. bolts M 8 x 16 Din 933
- incl. spring washers M8 Din 127

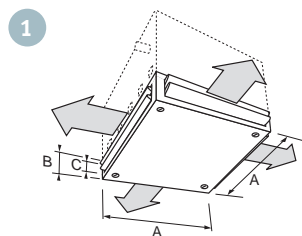
## Jaga AVS® Unit heater\_Air exhaust options



Unit heater

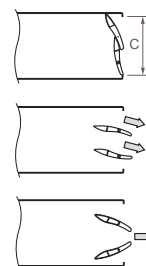


### 4- Sided AVS air diffuser

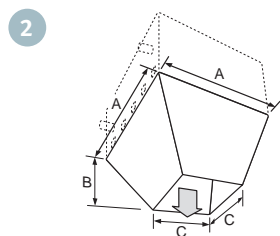


for size	CODE	A	B	C	Weight kg
000 (Mini)	8375.060100	41.0	18.8	13.8	7.2
100	8375.060101	53.0	18.8	13.8	9.2
200	8375.060102	65.0	18.8	13.8	11.8
300	8375.060103	77.0	18.8	13.8	14.6
400	8375.060104	89.0	18.8	13.8	17.7

- Order together with the unit heater. The unit heater needs to be adjusted.
- at this option has the unit heater no air exhausting grille
- will be delivered separately. Easy to mount and disassemble through click-fixing.
- finish identical to the unit heater (sandblast grey metallic, colour 001).
- aerodynamical angled louvres in satin black lacquered aluminium.
- maximum height = 2.5 m bottom end of the appliance.



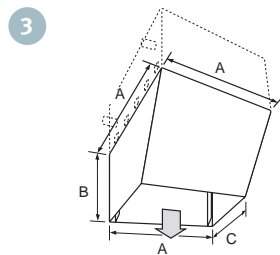
### Exhaust cone



for size	CODE	A	B	C	Weight kg
100	8375.080101	53.0	43.3	22.0	8.2
200	8375.080102	65.0	46.1	32.0	10.7
300	8375.080103	77.0	55.8	37.0	14.8
400	8375.080104	89.0	64.2	43.0	18.9

- Application: to obtain higher exhaust speed, which enables fixing at a high level.
- Order together with the unit heater. The unit heater needs to be adjusted.
- Will be delivered separately. Easy to mount and disassemble through click-fixing.
- Finish identical to the unit heater (sandblast grey metallic, colour 001).

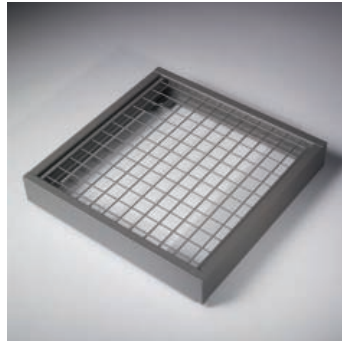
### Exhaust mouth piece



for size	CODE	A	B	C	Weight kg
100	8375.070101	53.0	54.5	10.5	9.7
200	8375.070102	65.0	60.0	18.0	17.3
300	8375.070103	77.0	72.5	19.0	24.0
400	8375.070104	89.0	103.5	25.0	36.7

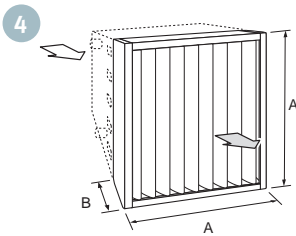
- Application: prevent cold air entering the room via the gates etc...
- Order together with the unit heater. The unit heater needs to be adjusted.
- Will be delivered separately. Easy to mount and disassemble through click-fixing.
- Finish identical to the unit heater (sandblast grey metallic, colour 001).

## Jaga AVS® Unit heater\_Air exhaust options



Unit heater

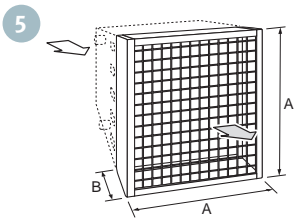
### Double deflection front grille



for size	CODE	A	B	Weight kg
000 (Mini)	8375.1101000	41.0	10.1	5.0
100	8375.110101	53.0	10.1	6.1
200	8375.110102	65.0	10.1	8.1
300	8375.110103	77.0	10.1	10.4
400	8375.110104	89.0	10.1	13.0

- Prevents developing too high a temperature at the opposite wall.
- Not suitable in use with the modulating version.
- Easy to mount through click-fixing at the top.
- Finish identical to the unit heater (sandblast grey metallic, colour 001).
- Aerodynamic angled louvres in satin black lacquered aluminium.

### Protection grille for sport centers



for size	CODE	A	B	Weight kg
100	8375.100101	53.0	10.1	5.7
200	8375.100102	65.0	10.1	6.7
300	8375.100103	77.0	10.1	8.4
400	8375.100104	89.0	10.1	8.8

- Easy to mount trough click-fixing at the top.
- Not suitable in use with the modulating version.
- Finish identical to the unit heater (sandblast grey metallic, colour 001).