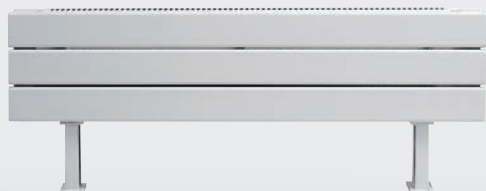
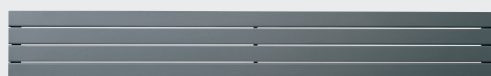
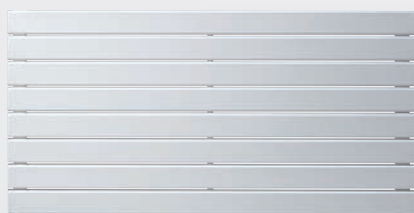




- 1. Panel Plus vertical
- 2. Panel Plus horizontal
- 3. Panel Plus Skirting model Wall
- 4. Panel Plus Skirting model Free-standing
- 5. Bench radiator





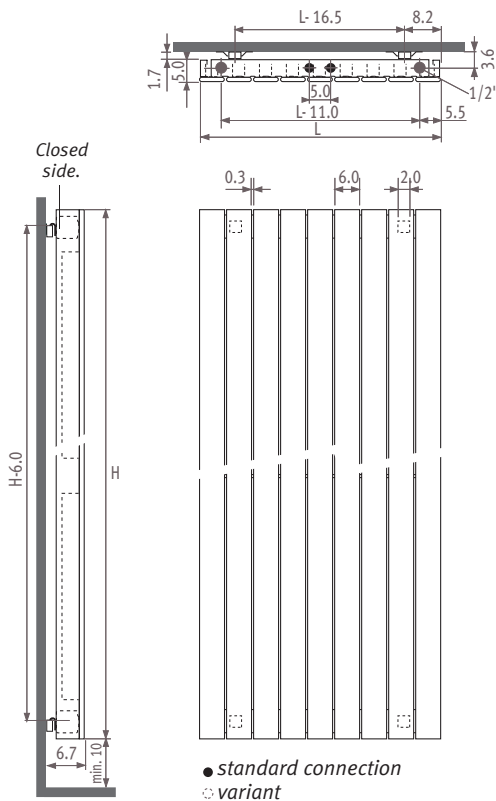
Panel Plus vertical



Panel Plus_vertical

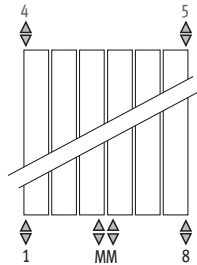
Dimensions

PPVW_Panel Plus Vertical Wall



Connections

Code: 1° number = flow
2° number = return



Standard connection

Universal central connection at the bottom end, code MM, flow left or right. Connection 18 or 81 at the bottom end is also possible with code MM.

Top end connection

Specify code 45 or 54 instead of MM. Provide an air vent on the central heating tube.

Not standard connection without surcharge.

Options

Extended wall fixings

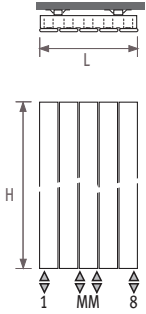
Code 9092.50

The space between the rear of the collector and the wall is 3.7 cm instead of 1.7 cm.

Only possible in combination with connection to the wall and with Deco-Pro valve.

Supplied free if the order code is specified along with the appliance code.

Outputs



Standard delivery

- universal central connection MM and 18/81 underneath
- wall fixing
- chrome-plated air vent and 3 drain cocks

Standard colours:

- white (233) RAL 9016 glossy
- white (201) RAL 9010 glossy
- sandblast grey metallic (001)

Panel Plus_vertical_type 11

code height length type colour conn.
ORDERING CODE: PPVW. 180 024 11. XXX /MM

H		L 024	031	037	043	050	056	062	069	075	081	087	094
180	75/65/20	584	730	875	1021	1167	1313	1459	1605	1751	1897	2043	2189
	90/70/20	744	930	1114	1300	1486	1672	1858	2044	2230	2416	2602	2788
200	75/65/20	644	805	965	1126	1287	1448	1609	1770	1931	2092	2253	2414
	90/70/20	819	1023	1227	1431	1636	1841	2045	2250	2455	2659	2864	3069
220	75/65/20	700	876	1051	1226	1401	1576	1751	1926	2101	2276	2451	2627
	90/70/20	888	1112	1334	1556	1778	2000	2222	2444	2666	2888	3110	3333
240	75/65/20	754	943	1131	1320	1508	1697	1885	2074	2262	2451	2639	2828
	90/70/20	955	1195	1433	1672	1910	2150	2388	2627	2865	3105	3343	3582
260	75/65/20	805	1006	1207	1408	1610	1811	2012	2213	2414	2616	2817	3018
	90/70/20	1018	1272	1526	1780	2036	2290	2544	2798	3052	3308	3562	3816
280	75/65/20	852	1066	1279	1492	1705	1918	2131	2344	2557	2770	2983	3197
	90/70/20	1075	1345	1614	1883	2152	2421	2690	2959	3227	3496	3765	4035
300	75/65/20	897	1121	1345	1569	1794	2018	2242	2466	2690	2915	3139	3363
	90/70/20	1130	1412	1695	1977	2260	2542	2825	3107	3389	3672	3955	4237



Output measured in accordance with EN442, at a water temperature of 75/65 and a room temperature of 20°C ($\Delta T=50$).



Panel Plus horizontal

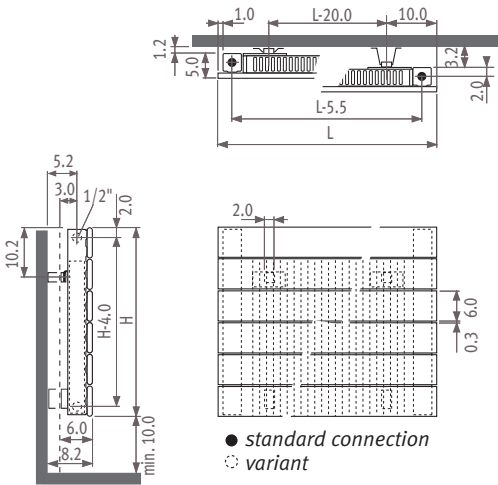


Panel Plus_horizontal

Dimensions

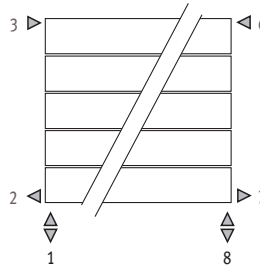
PPHW_Panel Plus Horizontal Wall

Type 11



Connections

Code: 1° number = flow
2° number = return



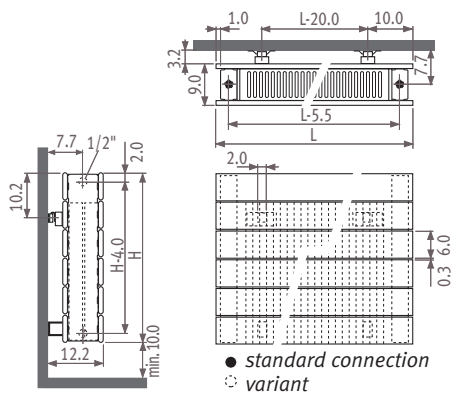
Standard connection

Code 18
Connection 18 or 81.

Side end connection:

One-sided: code 32 or 67 instead of 18
Cross-over: code 37 or 62 instead of 18

Type 22



Single point connection

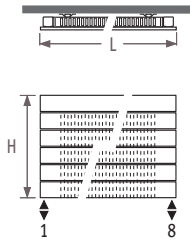
Specify code 11 (left) or 88 (right) instead of 18.

Always use a vertical diffusion tube (\varnothing 10 to 12mm) of min. length of 100 mm and a reduction washer.

Not standard connection without surcharge.

Configurations on size: see parts.

Outputs

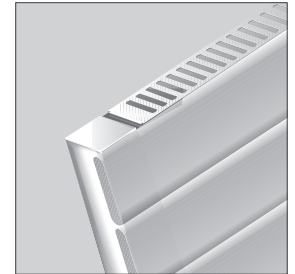


Standard delivery

- connection 18 underneath
- wall fixing
- chrome-plated air vent and drain cock
- pre-mounted grille

Standard colours:

- white (233) RAL 9016 glossy
- white (201) RAL 9010 glossy
- sandblast grey metallic (001)



Panel Plus_horizontal_type 11

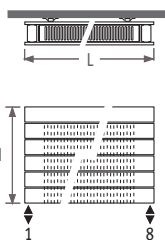
ORDERING CODE: PPHW. *code* *height* *length* *type* *colour* *conn.*
037 060 11. XXX /18/GR

H		L 060	080	100	120	140	160	180	200	220	240	260	280	300
037	75/65/20	380	507	633	760	887	1013	1140	1267	1394	1520	1647	1774	1900
	90/70/20	477	637	795	954	1114	1272	1431	1591	1750	1908	2068	2227	2385
043	75/65/20	425	566	708	849	991	1132	1274	1415	1557	1698	1840	1981	2123
	90/70/20	534	711	889	1066	1244	1421	1600	1777	1955	2132	2310	2487	2665
050	75/65/20	468	624	780	936	1091	1247	1403	1559	1715	1871	2027	2183	2339
	90/70/20	588	783	979	1175	1370	1566	1761	1957	2153	2349	2545	2741	2937
056	75/65/20	510	680	850	1020	1190	1360	1530	1700	1870	2040	2210	2380	2549
	90/70/20	640	854	1067	1281	1494	1707	1921	2134	2348	2561	2775	2988	3200
062	75/65/20	551	735	919	1102	1286	1470	1653	1837	2021	2205	2388	2572	2756
	90/70/20	692	923	1154	1384	1615	1846	2075	2306	2537	2768	2998	3229	3460
069	75/65/20	592	789	986	1183	1381	1578	1775	1972	2169	2367	2564	2761	2958
	90/70/20	743	991	1238	1486	1734	1982	2229	2476	2724	2972	3220	3467	3714
075	75/65/20	632	842	1053	1263	1474	1684	1895	2105	2316	2526	2737	2948	3158
	90/70/20	794	1057	1322	1586	1851	2115	2380	2643	2908	3172	3437	3702	3966
081	75/65/20	671	895	1119	1342	1566	1790	2013	2237	2461	2684	2908	3132	3356
	90/70/20	843	1124	1405	1685	1966	2248	2528	2809	3090	3370	3652	3933	4214
087	75/65/20	710	947	1184	1420	1657	1894	2131	2367	2604	2841	3077	3314	3551
	90/70/20	892	1189	1487	1783	2081	2378	2676	2972	3270	3568	3864	4161	4459
094	75/65/20	749	999	1248	1498	1748	1997	2247	2496	2746	2996	3245	3495	3745
	90/70/20	941	1254	1567	1881	2195	2508	2822	3134	3448	3762	4075	4389	4703



Output measured in accordance with EN442, at a water temperature of 75/65 and a room temperature of 20°C ($\Delta T=50$).

Outputs

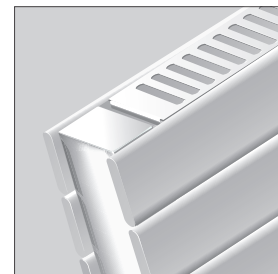


Standard delivery

- connection 18 underneath
- wall fixing
- chrome-plated air vent and drain cock
- pre-mounted grille

Standard colours:

- white (233) RAL 9016 glossy
- white (201) RAL 9010 glossy
- sandblast grey metallic (001)



Panel Plus_horizontal_type 22

code height length type colour conn.
ORDERING CODE:PPHW. 037 060 22. XXX /18/GR

H		L 060	080	100	120	140	160	180	200	220	240	260	280	300
037	75/65/20	659	879	1098	1318	1538	1757	1977	2197	2416	2636	2856	3075	3295
	90/70/20	843	1124	1404	1686	1967	2247	2528	2810	3090	3371	3652	3932	4214
043	75/65/20	742	989	1236	1483	1730	1978	2225	2472	2719	2966	3214	3461	3708
	90/70/20	949	1265	1581	1897	2212	2530	2845	3161	3477	3793	4110	4426	4742
050	75/65/20	819	1092	1365	1638	1911	2185	2458	2731	3004	3277	3550	3823	4096
	90/70/20	1047	1396	1746	2095	2444	2794	3143	3493	3842	4191	4540	4889	5238
056	75/65/20	892	1190	1487	1784	2082	2379	2676	2974	3271	3569	3866	4163	4461
	90/70/20	1141	1522	1902	2281	2663	3042	3422	3803	4183	4564	4944	5324	5705
062	75/65/20	961	1281	1601	1922	2242	2562	2882	3203	3523	3843	4163	4484	4804
	90/70/20	1229	1638	2047	2458	2867	3276	3686	4096	4505	4915	5324	5734	6144
069	75/65/20	1025	1367	1709	2051	2392	2734	3076	3418	3760	4101	4443	4785	5127
	90/70/20	1311	1748	2186	2623	3059	3496	3934	4371	4808	5245	5682	6119	6557
075	75/65/20	1086	1448	1810	2172	2534	2896	3258	3620	3982	4344	4706	5068	5430
	90/70/20	1389	1851	2314	2777	3240	3703	4166	4629	5091	5554	6017	6480	6943
081	75/65/20	1143	1524	1905	2286	2667	3048	3430	3811	4192	4573	4954	5335	5716
	90/70/20	1461	1949	2436	2923	3410	3897	4386	4873	5360	5847	6334	6821	7309
087	75/65/20	1197	1596	1995	2394	2793	3192	3591	3990	4389	4788	5186	5585	5984
	90/70/20	1530	2041	2551	3061	3571	4081	4591	5102	5612	6122	6631	7141	7651
094	75/65/20	1247	1663	2079	2495	2910	3326	3742	4158	4574	4989	5405	5821	6237
	90/70/20	1594	2126	2658	3190	3721	4253	4785	5316	5848	6379	6911	7443	7975



Panel Plus Skirting model Wall

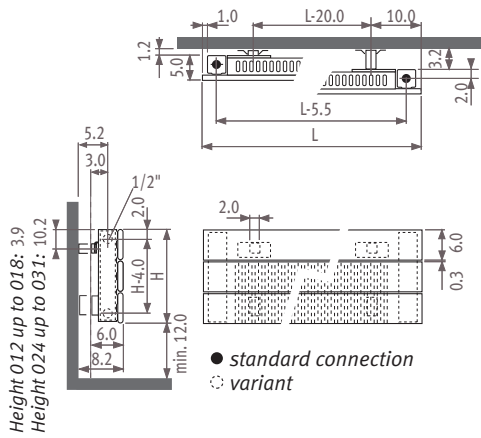


Panel Plus_skirting model_wall

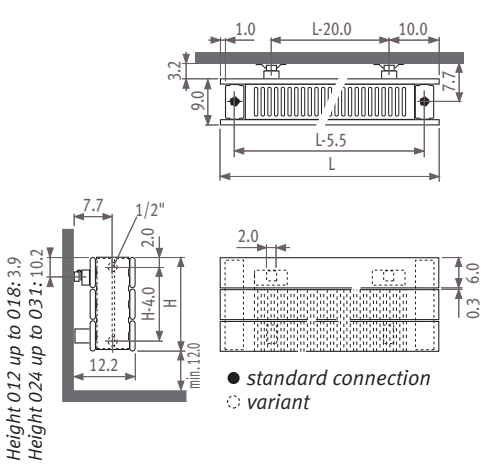
Dimensions

PPHW_Panel Plus Horizontal Wall

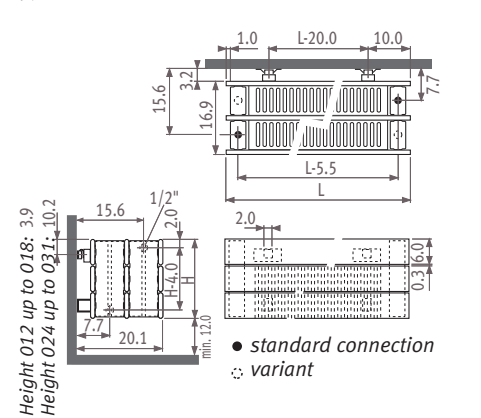
Type 11



Type 22

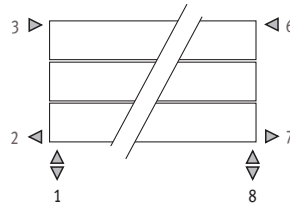


Type 34



Connections

Code: 1° number = flow
2° number = return



Standard connection

Code 18
Connection 18 or 81.

Side end connection:

One-sided: code 32 or 67 instead of 18
Cross-over: code 37 or 62 instead of 18

Single point connection

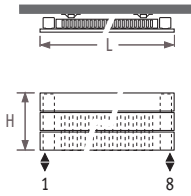
Specify code 11 (left) or 88 (right) instead of 18.

Always use a vertical diffusion tube (ø 10 to 12mm) of min. length of 100 mm and a reduction washer.

Not standard connection without surcharge.

Configurations on size: see parts.

Outputs

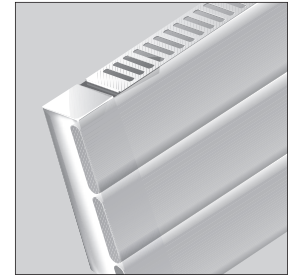


Standard delivery

- connection 18 underneath
- wall fixing
- chrome-plated air vent and drain cock
- pre-mounted grille

Standard colours:

- white (233) RAL 9016 glossy
- white (201) RAL 9010 glossy
- sandblast grey metallic (001)



Panel Plus Skirting model Wall_type 11

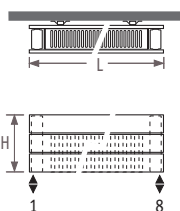
ORDERING CODE: PPHW. *code* 012 *height* 100 *length* 11. *type* XXX *colour* /18/GR *conn.*

H		L 060	080	100	120	140	160	180	200	220	240	260	280	300	320	340	360	380	420	460
012	75/65/20	---	---	261	313	365	417	469	521	573	625	677	729	782	834	886	938	990	1094	1198
	90/70/20	---	---	326	391	456	521	586	651	716	781	846	911	978	1043	1108	1173	1238	1368	1498
018	75/65/20	---	---	389	466	544	622	699	777	855	932	1010	1088	1166	1243	1321	1399	1476	1632	1787
	90/70/20	---	---	488	585	683	781	878	976	1073	1170	1268	1366	1464	1561	1659	1756	1853	2049	2244
024	75/65/20	285	380	475	570	665	760	855	950	1045	1140	1235	1330	1425	---	---	---	---	---	---
	90/70/20	358	477	596	716	835	954	1073	1193	1312	1431	1551	1670	1789	---	---	---	---	---	---
031	75/65/20	334	445	556	668	779	890	1001	1113	1224	1335	1446	1558	1669	---	---	---	---	---	---
	90/70/20	419	559	698	839	978	1117	1257	1397	1537	1676	1815	1956	2095	---	---	---	---	---	---



Output measured in accordance with EN442, at a water temperature of 75/65 and a room temperature of 20°C ($\Delta T=50$).

Outputs

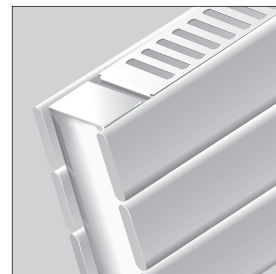


Standard delivery

- connection 18 underneath
- wall fixing
- chrome-plated air vent and drain cock
- pre-mounted grille

Standard colours:

- white (233) RAL 9016 glossy
- white (201) RAL 9010 glossy
- sandblast grey metallic (001)

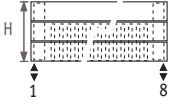


Panel Plus Skirting model Wall_type 22

code height length type colour conn.
ORDERING CODE: PPHW. 012 100 22. XXX /18/GR

H		L 060	080	100	120	140	160	180	200	220	240	260	280	300	320	340	360	380	420	460
012	75/65/20	---	---	454	545	635	726	817	908	998	1089	1180	1271	1361	1452	1543	1634	1724	1906	2087
	90/70/20	---	---	566	679	791	905	1018	1131	1243	1357	1470	1584	1696	1809	1922	2036	2148	2375	2600
018	75/65/20	---	---	626	751	876	1001	1126	1252	1377	1502	1627	1752	1877	2002	2128	2253	2378	2628	2878
	90/70/20	---	---	801	960	1120	1280	1440	1601	1761	1921	2081	2241	2400	2560	2721	2881	3041	3361	3680
024	75/65/20	477	636	794	953	1112	1271	1430	1589	1748	1907	2065	2224	2383	---	---	---	---	---	---
	90/70/20	610	813	1015	1219	1422	1625	1829	2032	2235	2439	2641	2844	3047	---	---	---	---	---	---
031	75/65/20	571	761	951	1142	1332	1522	1713	1903	2093	2283	2474	2664	2854	---	---	---	---	---	---
	90/70/20	730	973	1216	1460	1703	1946	2191	2434	2677	2920	3164	3407	3650	---	---	---	---	---	---

Outputs

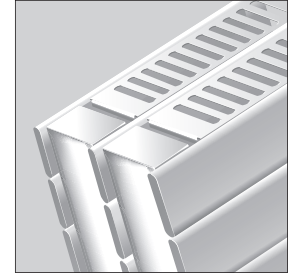


Standard delivery

- connection 18 underneath
- wall fixing
- chrome-plated air vent and drain cock
- pre-mounted grille

Standard colours:

- white (233) RAL 9016 glossy
- white (201) RAL 9010 glossy
- sandblast grey metallic (001)



Panel Plus Skirting model Wall

Panel Plus Skirting model Wall_type 34

ORDERING CODE: PPHW. *code height length type colour conn.* 012 100 34. XXX /18/GR

H		L 060	080	100	120	140	160	180	200	220	240	260	280	300	320	340	360	380	420	460
012	75/65/20	---	---	752	903	1053	1204	1354	1505	1655	1806	1956	2106	2257	2407	2558	2708	2859	3160	3461
	90/70/20	---	---	980	1177	1372	1569	1764	1961	2157	2353	2549	2744	2941	3137	3333	3529	3726	4118	4510
018	75/65/20	---	---	1140	1369	1597	1825	2053	2281	2509	2737	2965	3193	3421	3649	3877	4106	4334	4790	5246
	90/70/20	---	---	1486	1784	2081	2378	2675	2972	3269	3567	3864	4161	4458	4755	5052	5350	5648	6242	6836
024	75/65/20	875	1166	1458	1749	2041	2332	2624	2915	3207	3498	3790	4081	4373	---	---	---	---	---	---
	90/70/20	1140	1519	1900	2279	2660	3039	3419	3798	4179	4558	4939	5318	5698	---	---	---	---	---	---
031	75/65/20	1018	1357	1697	2036	2375	2715	3054	3393	3733	4072	4411	4751	5090	---	---	---	---	---	---
	90/70/20	1326	1768	2211	2653	3094	3537	3979	4421	4864	5305	5747	6190	6631	---	---	---	---	---	---



Panel Plus Skirting model Free-standing

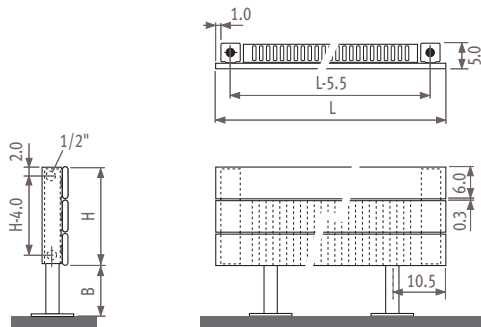


Panel Plus Skirting model Free-standing

Dimensions

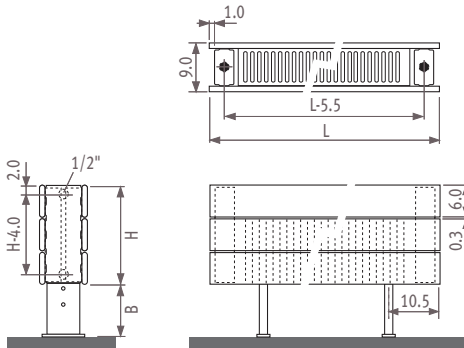
PPHF_Panel Plus horizontal free-standing

Type 11



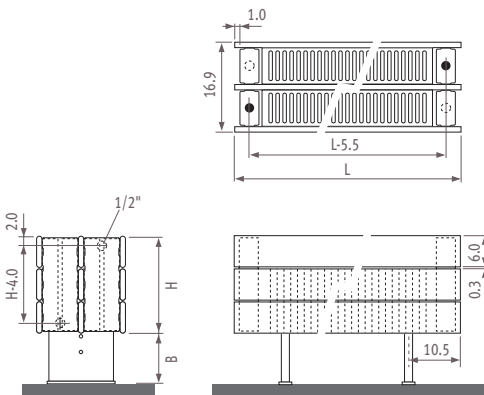
- standard connection
- variant

Type 22



- standard connection
- variant

Type 34



- standard connection
- variant

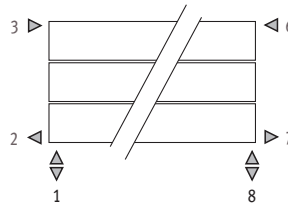
Dimensions in cm

H	12	18	>18
B	7.5	10.0 - 13.0	12.0 - 17.0

Configurations on size: see parts.

Connections

Code: 1° number = flow
2° number = return



Standard connection

Code 18
Connection 18 or 81.

Side end connection:

One-sided: code 32 or 67 instead of 18
Cross-over: code 37 or 62 instead of 18

Single point connection

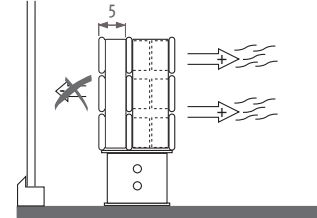
Specify code 11 (left) or 88 (right) instead of 18.

Always use a vertical diffusion tube (ø 10 to 12mm) of min. length of 100 mm and a reduction washer.

Not standard connection without surcharge.

Options

Radiation Prevention Screen



Fitted on the rear side without water connection to diminish the heat loss at the window side. Available for type 11 and type 22 on feet.

Price:

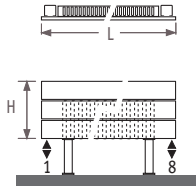
add the price of a type 10 (see page 198) with the same dimensions to the price of the standard model.

Ordering code: add to the code /RS

Example:

PPHF. 012 100 22.XXX/RS

Outputs

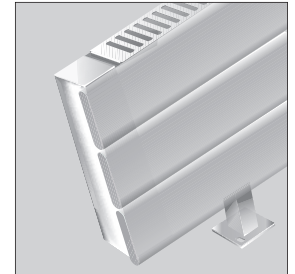


Standard delivery

- connection 18 underneath
- standard feet for assembly on finished floor
- chrome-plated air vent and drain cock
- pre-mounted grille

Standard colours:

- white (233) RAL 9016 glossy
- white (201) RAL 9010 glossy
- sandblast grey metallic (001)



Panel Plus Skirting model Free-standing_type 11

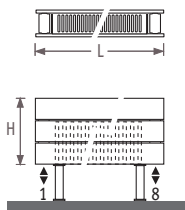
code height length type colour conn.
ORDERING CODE: PPHF. 012 100 11. XXX /18/GR

H		L 060	080	100	120	140	160	180	200	220	240	260	280	300	320	340	360	380	420	460
012	75/65/20	---	---	261	313	365	417	469	521	573	625	677	729	782	834	886	938	990	1094	1198
	90/70/20	---	---	326	391	456	521	586	651	716	781	846	911	978	1043	1108	1173	1238	1368	1498
018	75/65/20	---	---	389	466	544	622	699	777	855	932	1010	1088	1166	1243	1321	1399	1476	1632	1787
	90/70/20	---	---	488	585	683	781	878	976	1073	1170	1268	1366	1464	1561	1659	1756	1853	2049	2244
024	75/65/20	285	380	475	570	665	760	855	950	1045	1140	1235	1330	1425	---	---	---	---	---	---
	90/70/20	358	477	596	716	835	954	1073	1193	1312	1431	1551	1670	1789	---	---	---	---	---	---
031	75/65/20	334	445	556	668	779	890	1001	1113	1224	1335	1446	1558	1669	---	---	---	---	---	---
	90/70/20	419	559	698	839	978	1117	1257	1397	1537	1676	1815	1956	2095	---	---	---	---	---	---



Output measured in accordance with EN442, at a water temperature of 75/65 and a room temperature of 20°C ($\Delta T=50$).

Outputs

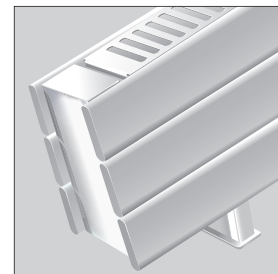


Standard delivery

- connection 18 underneath
- standard adjustable feet for mounting on finished floor
- chrome-plated air vent and drain cock
- pre-mounted grille

Standard colours:

- white (233) RAL 9016 glossy
- white (201) RAL 9010 glossy
- sandblast grey metallic (001)

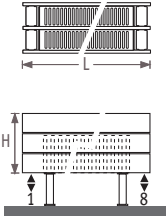


Panel Plus Skirting model Free-standing_type 22

code height length type colour conn.
ORDERING CODE: PPHF. 012 100 22. XXX /18/GR

H		L 060	080	100	120	140	160	180	200	220	240	260	280	300	320	340	360	380	420	460
012	75/65/20	---	---	454	545	635	726	817	908	998	1089	1180	1271	1361	1452	1543	1634	1724	1906	2087
	90/70/20	---	---	566	679	791	905	1018	1131	1243	1357	1470	1584	1696	1809	1922	2036	2148	2375	2600
018	75/65/20	---	---	626	751	876	1001	1126	1252	1377	1502	1627	1752	1877	2002	2128	2253	2378	2628	2878
	90/70/20	---	---	801	960	1120	1280	1440	1601	1761	1921	2081	2241	2400	2560	2721	2881	3041	3361	3680
024	75/65/20	477	636	794	953	1112	1271	1430	1589	1748	1907	2065	2224	2383	---	---	---	---	---	---
	90/70/20	610	813	1015	1219	1422	1625	1829	2032	2235	2439	2641	2844	3047	---	---	---	---	---	---
031	75/65/20	571	761	951	1142	1332	1522	1713	1903	2093	2283	2474	2664	2854	---	---	---	---	---	---
	90/70/20	730	973	1216	1460	1703	1946	2191	2434	2677	2920	3164	3407	3650	---	---	---	---	---	---

Outputs

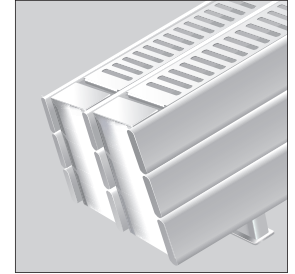


Standard delivery

- connection 18 underneath
- standard adjustable feet for mounting on finished floor
- chrome-plated air vent and drain cock
- pre-mounted grille

Standard colours:

- white (233) RAL 9016 glossy
- white (201) RAL 9010 glossy
- sandblast grey metallic (001)



Panel Plus Skirting model Free-standing_type 34

code height length type colour conn.
ORDERING CODE: PPHF. 012 100 34. XXX /18/GR

H		L 060	080	100	120	140	160	180	200	220	240	260	280	300	320	340	360	380	420	460
012	75/65/20	---	---	752	903	1053	1204	1354	1505	1655	1806	1956	2106	2257	2407	2558	2708	2859	3160	3461
	90/70/20	---	---	980	1177	1372	1569	1764	1961	2157	2353	2549	2744	2941	3137	3333	3529	3726	4118	4510
018	75/65/20	---	---	1140	1369	1597	1825	2053	2281	2509	2737	2965	3193	3421	3649	3877	4106	4334	4790	5246
	90/70/20	---	---	1486	1784	2081	2378	2675	2972	3269	3567	3864	4161	4458	4755	5052	5350	5648	6242	6836
024	75/65/20	875	1166	1458	1749	2041	2332	2624	2915	3207	3498	3790	4081	4373	---	---	---	---	---	---
	90/70/20	1140	1519	1900	2279	2660	3039	3419	3798	4179	4558	4939	5318	5698	---	---	---	---	---	---
031	75/65/20	1018	1357	1697	2036	2375	2715	3054	3393	3733	4072	4411	4751	5090	---	---	---	---	---	---
	90/70/20	1326	1768	2211	2653	3094	3537	3979	4421	4864	5305	5747	6190	6631	---	---	---	---	---	---



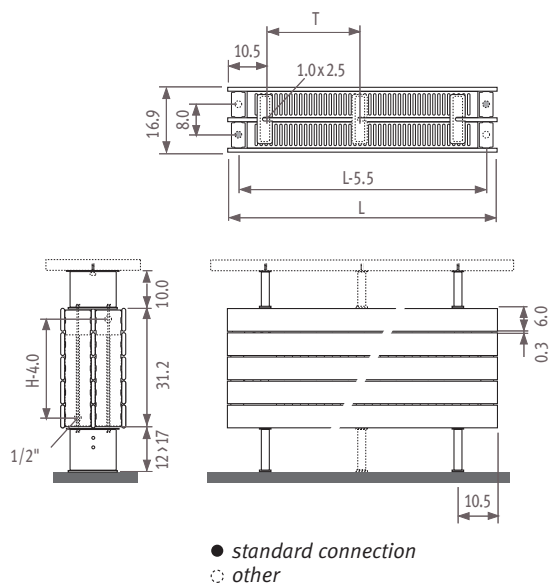
Bench radiator



Bench radiator

Dimensions

PPHF.../BE_Panel Plus Horizontal Freestanding / Bench



	L	120	160	200	240	280
Distance between the bench supports*	T	99	69.5	89.5	109.5	86.5
Number of bench supports		2	3	3	3	4
Number of feet		2	2	2	3	3

*Tablet not included: use a bench with sufficient thickness and low bending resistance to cover distance T.

Outputs

Bench radiator	code	height	length	type	colour	conn.
ORDERING CODE:	PPHF.	031	120	034.	XXX	/18/BE

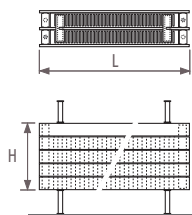
H		L 120	160	200	240	280
031	75/65/20	2199	2932	3665	4398	5131
	90/70/20	2765	3687	4608	5530	6451

Standard delivery

- mountingset for shelf
- specially adapted grille
- Panel Plus radiator type 34 free-standing
- chrome-plated air vent 1/2"
- drain cock 1/2"
- tablet not included

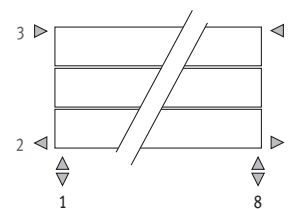
Standard colours:

- white (233) RAL 9016 glossy
- white (201) RAL 9010 glossy
- sandblast grey metallic (001)



Connections

Code: 1° number = flow
2° number = return



Standard connection

Code 18

Connection 18 or 81.

Side end connection

One-sided: code 32 or 67 instead of 18

Cross-over: code 37 or 62 instead of 18

Single point connection

Specify code 11 (left) or 88 (right) instead of 18.

Always use a vertical diffusion tube (ø 10 to 12mm) of min. length of 100 mm and a reduction washer.

Not standard connection without surcharge.